



# URGENT EVENT LISTING REMINDER!

**Event:** The Bellevue Festival of the Arts ([www.Bellevuefest.org](http://www.Bellevuefest.org))

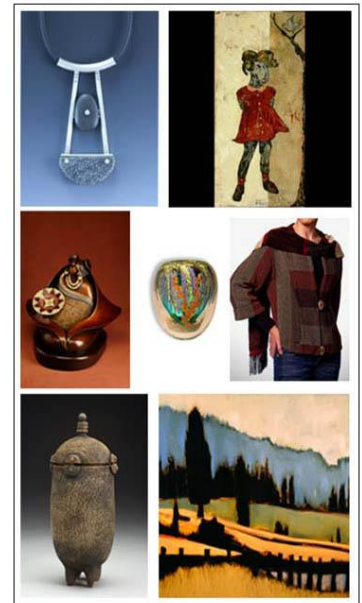
**Date:** July 23-25, 2010, during Bellevue's annual Arts Fair weekend.

**Hours:** Friday & Saturday: 10 a.m. to 8 p.m. Sunday: 10 a.m. to 6 p.m.

**Place:** Out-of-Doors at the **Cost Plus World Market Lot** (10300 NE 8th St) at the Intersection of Bellevue Way NE and NE 8<sup>th</sup> St., across from Bellevue Square in Downtown Bellevue (across the street from the **Bellevue Art Museum's Artsfair**)

**Cost:** Still FREE!

**Getting There:** Easy access via the Festival and the South Kirkland, Houghton Park, and South Bellevue **Park and Ride** lots.



**Parking:** Affordable paid parking will also be available in many of Bellevue's downtown buildings, along with Bike Corral parking options as well.

**Highlights:** With a growing audience and steadily increasing profile, the Bellevue Festival of the Arts is a leading participant in the Bellevue Arts Fair weekend each July, and has left behind its modest beginnings of a quarter-century past, attracting tourists, arts aficionados, festival-goers, and media from across the Northwest. The BFOA features the finest in juried arts and crafts, plus food, fun and live music--and admission is free! Now in its triumphant 26<sup>th</sup> year, the BFOA is one of the Eastside's most exciting annual cultural events, showcasing gorgeous and unforgettable jewelry, photography, textiles, glass, fine art, woodwork, pottery, sculpture, and more. It's the perfect Summer family outing for old and young alike!

**Giving Back:** In 2010, the BFOA continues to distribute net proceeds back to worthy local causes and international charities. This year, the BFOA also made an immediate donation to a human rights group in Haiti following its catastrophic earthquake.

**Quotable:** "There are several excellent arts festivals for the public to choose from during Arts Fair weekend each July, however the Bellevue Festival of the Arts has evolved over the past quarter-century into one of the most prestigious juried arts and crafts fairs in its own right nationwide," comments **Ann Sutherland**. "We're proud to offer acclaimed and leading artists found nowhere else, while continuing to directly benefit and support a number of worthwhile local charities."

**Photo Caption:** **2010 includes such acclaimed artists as:** (COLLAGE, CLOCKWISE FROM TOP LEFT): Jane Penman (Jewelry), Brian McGuffey (Painting), Sharon Berube (Textile), Christopher Perry (Painting), Carol Lebreton (Pottery), Kim Obrzut (Bronze Sculpture), and Chris Heilman (Glass). All works copyright © 2010 to their respective artists.

**More Info:** Ann Sutherland, at (206) 363-2048 or [Info@bellevuefest.org](mailto:Info@bellevuefest.org).

**PR Queries:** For media information, images, logos, or other PR assistance, please contact Angela Mitchell at (904) 982-8043 or [paramitch@aol.com](mailto:paramitch@aol.com). (Media/PR only, **not for print!**)

